



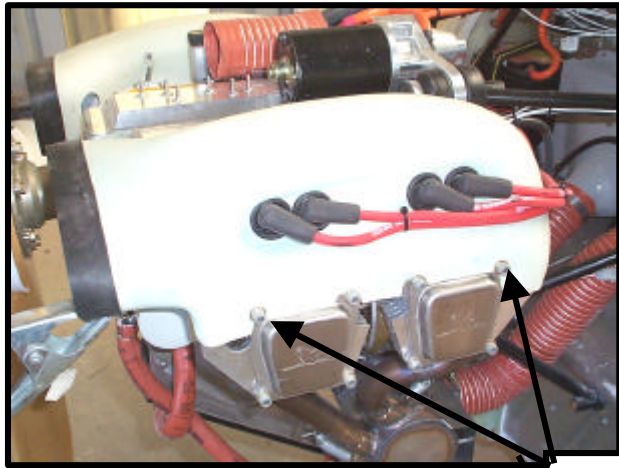
RAM AIR COOLING DUCTS PROCEDURE 4 & 6 Cylinder

Air Ducts

As the Jabiru Ram air cooling ducts that are used on the Jabiru engines are fitted to a large number of different aircraft, the nose of the duct is left longer for different applications. It may be necessary to cut the front of the Duct down to fit your cowl. When satisfied with the length, cut 1mm insertion rubber to length, sand rubber & cooling duct to ensure a good bond. Bond with 5-min Araldite making sure you have about 1/2" overlap.

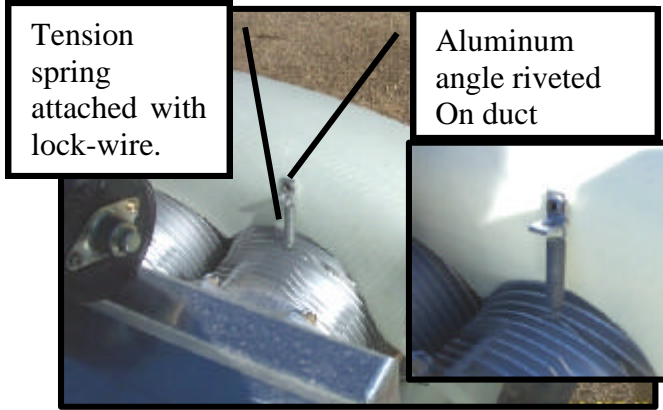


Clamp rubber while rubber is being glued.



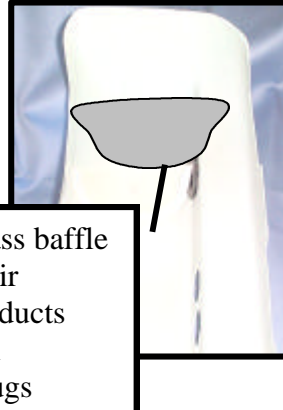
Ram Air cooling duct installed.

Attachment points Left & right Side



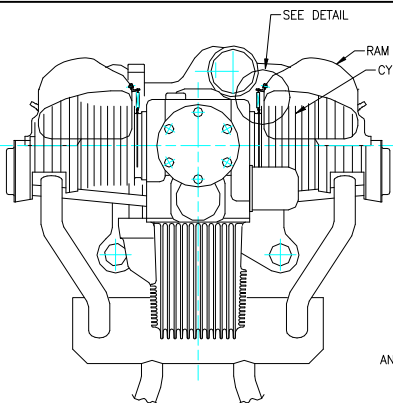
Tension spring attached with lock-wire.

Aluminum angle riveted On duct

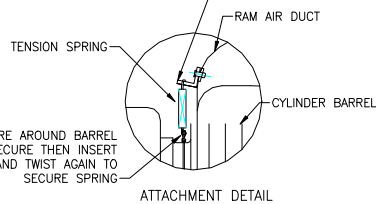


Fiberglass baffle in ram air cooling ducts between sparkplugs

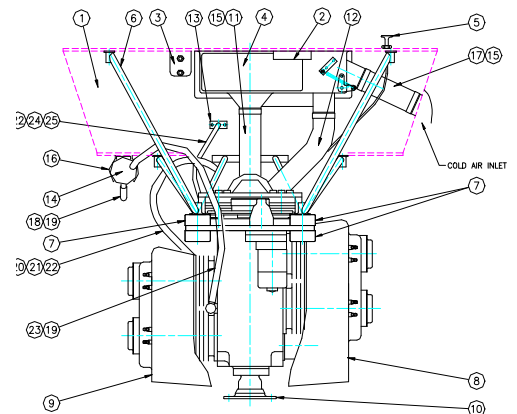
Ram air cooling duct with Tension spring
Wire is wound around the cylinder to hold the spring for attachment to the aluminium angle which is riveted to the Ram air Cooling Duct. Only attach too the front two cylinders i.e. #1 & 2 Cyl.



ALUMINIUM ANGLE BRACKET ATTACHED TO RAM AIR DUCT WITH POP RIVET AND A WASHER ON INSIDE TO DISTRIBUTE LOAD POSITION TO PROVIDE TENSION ON SPRING



WRAP TIE WIRE AROUND BARREL AND TWIST TO SECURE THEN INSERT SPRING AND TWIST AGAIN TO SECURE SPRING



Drawing 9111094/1 AIR DUCT ATTACHMENT

Gull Wing Baffle for 6 Cylinder engines only

These are fitted between the cylinders in order to enable air to go through the head fins. The Ram air cooling ducts fit over the Gull Wings after the gull wings are fitted. To fit Gull wings, wrap wire around the two cylinders (#3 & #4) & by attaching a spring under the Cylinders using a spring to tension baffles onto the cylinders.

See Photo below to indicate where lock wire wraps around cylinders on L&R hand side.

