

TOP OUTBOARD SEAT BELT REO:
LAY UP 3 LAYERS EITHER SIDE OF
B'HEAD, FROM B'HEAD ONTO FUSELAGE
SKIN. EACH LAYER 75 WIDE x 250 LONG AF303 GLASS.

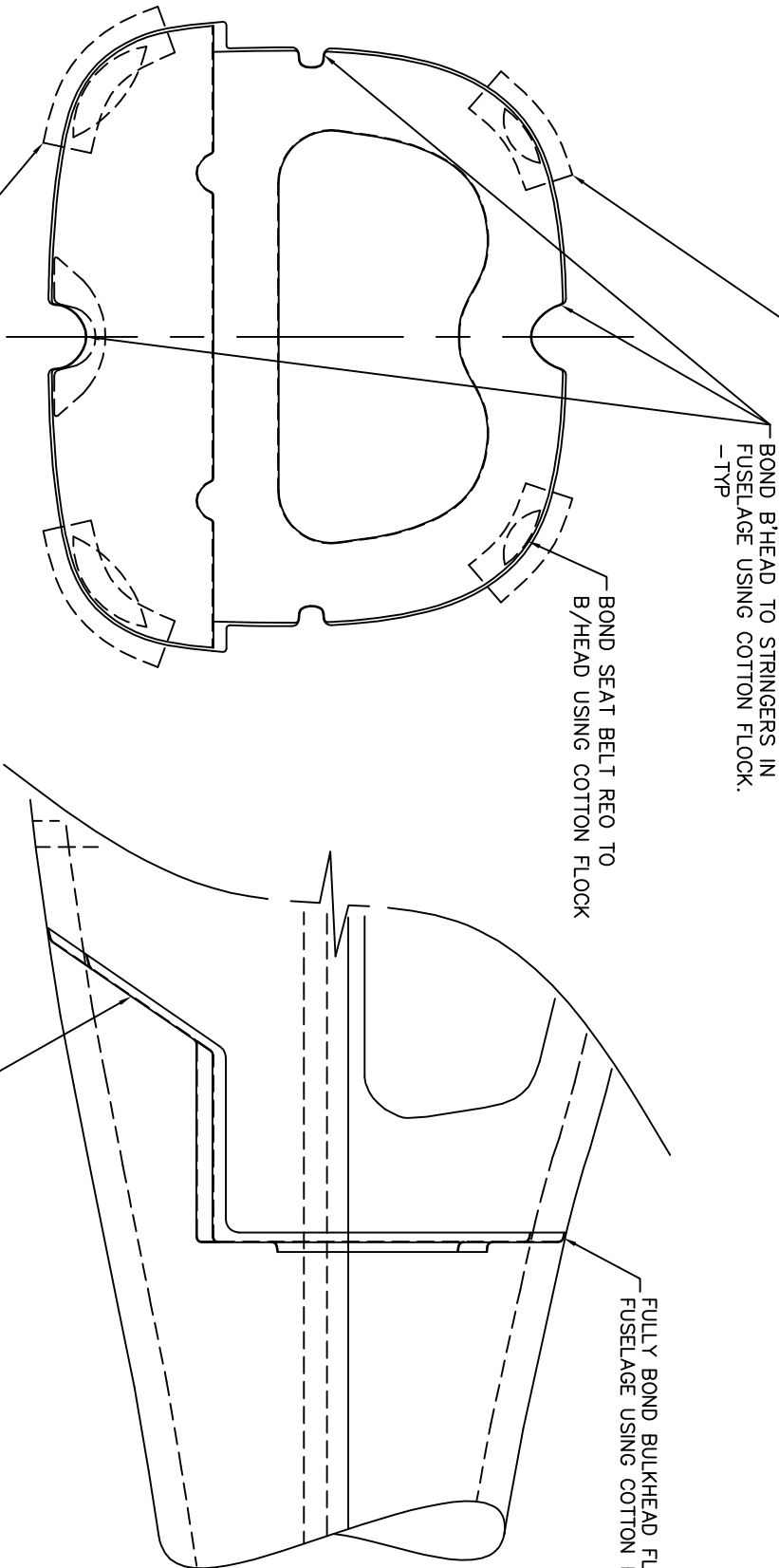
BOND B'HEAD TO STRINGERS IN
FUSELAGE USING COTTON FLOCK.
-TYP

BOND SEAT BELT REO TO
B'HEAD USING COTTON FLOCK

FULLY BOND BULKHEAD FLANGE TO
FUSELAGE USING COTTON FLOCK

LOWER OUTBOARD SEAT BELT REO:
LAY UP 10 LAYERS ON FRONT OF
B'HEAD, FROM B'HEAD ONTO FUSELAGE
SKIN. EACH LAYER 75x250 AF303 GLASS.

HOLD B'HEAD IN PLACE USING MIN OF 4
SELF TAPPING SCREWS WHILE COTTON FLOCK CURES.
REMOVE SCREWS ONCE RESIN HAS SET.



- NOTES:
- "COTTON FLOCK" BONDING AGENT MADE BY MIXING COTTON FIBRE FLOCK WITH CIBA-GIGEY LC3600 EPOXY RESIN SYSTEMS TO GUEY CONSISTENCY.
 - REFER TO DRAWING #1153023 FOR DETAILS OF FUSELAGE ASSEMBLY.

5	1143024	SEAT BELT REO UPPER J400	2
4	1144024	SEAT BELT REO LOWER O/SIDE J400	2
3	1143024	CENTRE REAR SEAT BELT REO J400	1
2	1153023	CARGO SHELF / FWD BULKHEAD J200/J400	1
1	1153523	J200/J400 FUSELAGE ASSY	1
ITEM	PART No.	DESCRIPTION	QTY.

LIMITS	+/- 1.0/m
MATERIAL	AS DESCRIBED
DRAWN	DS
APPR.	

AVTECH P/L
HINKLER AIRPORT
BUNDBERG

TITLE
CARGO SHELF / FWD BULKHEAD
INSTALLATION DETAIL J200/J400

SCALE	1:8
DWG. NO.	1A005A0D-1
ISS.	1
DATE	24/10/03
SHEET	1 OF 1